

## Dates and Times

The five-month program begins **March 19**  
and ends **August 8, 2018**.

## Introduction to the Interpreting Profession

FRNLC 2107000 1001

M/W • 6 - 9 p.m. • 3/19 - 4/18

## Interpreting Techniques

FRNLC 2107100 1001

TU/TH • 6 - 9 p.m. • 3/20 - 4/19

## Consecutive Interpreting and Sight Translation

FRNLC 2107200 1001

M/W • 6 - 9 p.m. • 4/23 - 5/23

## Simultaneous Interpreting

FRNLC 2107300 1001

TU/TH • 6 - 9 p.m. • 4/24 - 5/24

## Interpreting in Business/ Commercial Settings

FRNLC 2107400 1001

M/W • 6 - 9 p.m. • 5/30 - 7/2

## Interpreting in Medical Settings

FRNLC 2107500 1001

TU/TH • 6 - 9 p.m. • 5/29 - 6/28

## Interpreting in Legal Settings

FRNLC 2107600 1001

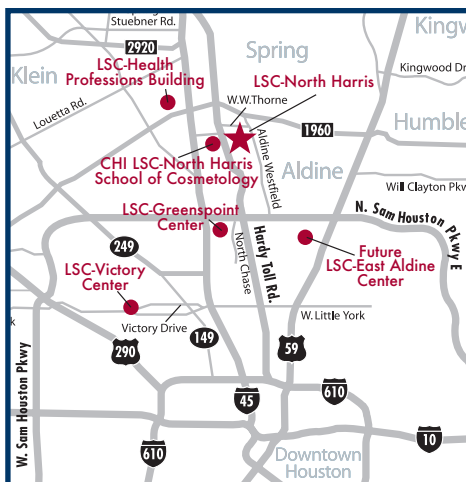
M/W • 6 - 9 p.m. • 7/9 - 8/8

## Registering for Class

Register in person, by phone or mail.  
Forms of payment are cash, check, money  
order or credit card.

You may register in person at the  
LSC-North Harris Continuing Education Office,  
8 a.m. - 5 p.m., Monday - Friday  
or by calling **281.618.5602**.

For information contact Erich Polack  
at **Erich.G.Polack@LoneStar.edu**  
or **281.618.5564**.



### LSC-North Harris

2700 W.W. Thorne Drive, Houston, Texas 77073  
281.618.5400

### LSC-Greenspoint Center

250 N. Sam Houston Parkway, East, Houston, Texas 77060  
281.260.3500

### LSC-Victory Center

4141 Victory Drive, Houston, Texas 77088  
281.810.5602

### LSC-Health Professions Building

17200 & 17202 Red Oak, Houston, Texas 77090  
281.943.6900

### CHI Lone Star College-North Harris School of Cosmetology

910 E. Richey Road, Houston, Texas 77073  
832.234.5600



## Continuing Education

LoneStar.edu/NorthHarris

Lone Star College is committed to the principle of equal opportunity in education and employment. Lone Star College does not discriminate against individuals on the basis of race, color, gender, religion, disability, age, veteran status, nationality or ethnicity in the administration of its educational policies, admissions policies, employment policies, scholarship and loan program, and other college-administered programs and activities.



# Bilingual Interpreter



# LSC-North Harris Bilingual Interpreter Certificate Program

Funded through a Title V Hispanic-Serving Institution Grant from the U.S. Department of Education.

## About The Program

The Bilingual English/Spanish Interpreter Program provides professional training for students who wish to undertake rigorous and challenging careers as English/Spanish interpreters.

Increased international communication in politics, science, technology, business, the arts and media has heightened the demand for highly skilled interpreters who can work effectively across language and cultural barriers.

The program consists of seven courses listed under Course Descriptions. Each course consists of 10 class periods, three hours each. Upon successful completion of each course, students receive a certificate of completion from Lone Star College, awarding 3.0 continuing education units (CEUs).

Upon completion of the program, students receive a Bilingual English/Spanish Interpreter Certificate, which is not equivalent to interpreter licensing. However, the Lone Star College certificate does serve as proof of training in interpreting and will give students an edge when seeking employment to apply their skills.

Total Contact Hours: 210  
21.0 CEUs

## Course Descriptions

### Introduction to the Interpreting Profession FRNLC 2107000

This course presents an introduction to the interpreting profession. It provides a historical framework for the current principles, ethics, roles, responsibilities and standard practices of the interpreter. Students must be fluent in both English and Spanish.

**Prerequisite:** Interpreting Entry Exam

### Interpreting Techniques FRNLC 2107100

This course presents specific theories and practices in interpreting oral communication from English to Spanish and Spanish to English. It includes theories of interpreting, techniques of interpreting, interpreting strategies, interpreting procedures and modes of interpreting.

**Prerequisite:** FRNLC 2107000

### Consecutive Interpreting and Sight Translation FRNLC 2107200

This course presents essential modes of interpreting. It includes history and use, theory, interpreting skills development, sight translation skills, consecutive interpreting skills and interpreting issues.

**Prerequisite:** FRNLC 2107100

### Simultaneous Interpreting FRNLC 2107300

This course presents the study and practice of simultaneous interpreting. It includes history and use, theory, interpreting skills development, simultaneous interpreting skills and issues in simultaneous interpreting.

**Prerequisite:** FRNLC 2107100

### Interpreting in Business/Commercial Settings FRNLC 2107400

This course introduces participants to interpreting in a business/commercial context. It includes interpreting in a business/commercial setting, pronunciation of Spanish and English names, Spanish and English business/commercial terminology, bicultural business/commercial communication and regional dialects.

**Prerequisite:** FRNLC 2107300

### Interpreting in Medical Settings FRNLC 2107500

This course introduces participants to interpreting in a medical context. It includes interpreting in a medical setting, pronunciation of Spanish and English names, Spanish and English medical terminology, bicultural medical communication and regional dialects.

**Prerequisite:** FRNLC 2107300

### Interpreting in Legal Settings FRNLC 2107600

This course introduces participants to interpreting in a legal context. It includes interpreting in a legal setting, knowledge of legal procedure and ancillary issues related to legal terminology in Spanish and English, bicultural legal communication, and regional differences.

**Prerequisite:** FRNLC 2107300

## Program Learning Outcomes

1. Translate spoken passages from one language into another.
2. Provide consecutive or simultaneous interpreting between languages.
3. In consecutive interpreting, listen to complete statements in one language, translate to second, and translate responses from second into first language.
4. Express either approximate or exact translation, depending on nature of occasion.
5. In simultaneous interpreting, render oral translation of material at time it is being spoken, usually hearing material over electronic audio system and broadcasting translation to listeners.
6. Translate written documents orally from one language into another.

## Admission Requirements

Students must take an Interpreting Entry Exam, which is a written and oral assessment of language skills in English and Spanish. It tests student's knowledge of vocabulary, grammar, reading comprehension, and spelling (which includes proper use of diacritics, e.g. accent marks) in both languages.

## Tuition and Fees:

Each 30-hour course costs \$414. There is a \$25 fee for the Interpreting Entry Exam.