

# BEYOND

CHANGING EXPECTATIONS WITH HIGHER EDUCATION

VOL. 1 NO. 1

DECEMBER 2008

## INVESTEX MAKES DONATION TO SUPPORT LSCS EMPLOYEE EMERGENCY FUND



Jana Anders, center, vice president of business and community development for InvestTex Credit Union presents a \$2,000 check for the LSC Foundation Employee Emergency Fund to Vice Chancellor Ray Laughter and Executive Director Darcy Mingoia.

Investex Credit Union recently donated \$2,000 to Lone Star College Foundation for the Lone

Star College System Employee Emergency Fund.

The fund was established in 2003, with an initial donation of \$2,000 from InvestTex Credit Union, previously known as the Aldine Teacher's Credit Union. The initial donation was matched by the LSC Foundation board of directors. Since its inception, private donations have been made to the fund and requests for support have been met.

"As a result of Hurricane Ike, a number of our colleagues experienced losses," said Darcy Mingoia, LSC Foundation executive director.

"Each LSCS president has an equal portion of the funds to help their employees, but the needs are much greater than what is currently available," said Mingoia.

In an effort to encourage support and donations for the LSCS EEF in the wake of Hurricane Ike, InvestTex Credit Union President Keith Kearney once again

donated \$2,000 to the fund.

"LSCS has the benefit of a number of wonderful community partners that work with us to insure that our students, employees and programs are supported. Investex Credit Union is one such partner and we sincerely appreciate their continued leadership in supporting our Employee Emergency Fund," said Mingoia.

LSC Foundation has additionally received more than \$4,000 for the EEF through individual donors including a number of system and campus employees.

"In times of need, it is admirable that not only our community partners, but also our staff stepped up and assisted those impacted so dramatically by this natural disaster," Mingoia explained.

"Donations were made benefiting each campus and the depth of generosity was commendable," she added.

## 2008 NEW ENDOWMENTS

- AAUW, NHC Branch Endowment
- In Honor of Dr. Graciella G. Blanco Endowment
- In Honor of Nancy F. Caldwell Endowment
- Susan J. Caldwell Endowment for the Arts
- Carl's BBQ Endowment
- Dave and Jacque Feldman Endowment (Second Endowment)
- Andrew Wade Heron Memorial Endowment
- Mathematics Department at LSC-Tomball Endowment
- Montgomery and Associates Endowment
- Dr. Linda Stegall Excellence in Education Endowment
- Texas Process Equipment Endowment (Third Endowment)
- Dr. Diane Troyer Endowment
- The Kelsey Vogel "Shining Star" Memorial Scholarship
- Dr. Bob Williams Endowment

FIRST CLASS  
MAIL  
U.S. POSTAGE  
PAID  
PERMIT NO. 507  
NORTH HOUSTON, TX



## BOARD OF DIRECTORS

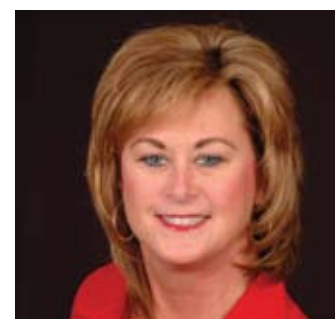
### EXECUTIVE COMMITTEE

- Karen West, *Chair*  
The Woodlands Development Company
- Fred Caldwell, *Vice Chair*  
Caldwell Companies
- Gil Staley, *Secretary*  
Economic Development Partnership
- Terry Sellers, *Treasurer*  
Sellers Group LLC
- Ray Laughter, *Director*  
Lone Star College System
- Seth Sharr, *Director*
- Stan St. Pierre, *Past Chair*

### DIRECTORS

- Martin Basaldua, M.D.  
Optimal Health and Wellness Center
- Randy Bates  
Bates & Coleman P.C.
- Cher Brock  
Lone Star College-North Harris
- Richard Carpenter  
Lone Star College System
- Mary Denney  
MLD Limited
- Don Grogg  
Texas Process Equipment Company
- Doug McCormick  
Entergy Corporation
- Cathy McHenry  
Wells Fargo
- Steve Sanders  
Memorial Hermann Hospital - The Woodlands
- Ellen H. Stutts, CPA
- Marsha Williams  
Woodforest Financial Services, Inc.
- Nockie Zizelmann  
MATTCO Manufacturing

## LSC FOUNDATION SCHOLARSHIP STUDENT GETS 'NEW DIRECTION' FOR HER EDUCATION



Tralisa Hallmark, LSC-Foundation scholarship recipient

Following a failed marriage after 20 years and a 22-year hiatus from being enrolled in school, Tralisa Hallmark drove to Lone Star College-Kingwood with the hope she could regain her confidence and get her life back.

Hallmark had an associate's degree in court reporting but always dreamed of continuing her formal education.

"As I passed the young students, I felt so inadequate to be on campus. I didn't know the lingo or how to ask the intelligent questions. I didn't even know the classes I needed. It took all my determination and strength not to turn and run. Thankfully, the wonderful staff of Lone Star College-Kingwood was there to rescue me from my confusion," said Hallmark.

"Having experienced so much loss in my recent life and feeling so insecure about going back to college, I believe my success in my return to school is based on that first encounter with the staff. Had they treated me any differently than they did, I probably would have walked away defeated because my self-esteem was so fragile. Instead, I got a pep talk about what a great decision I had made and how everyone there would help me be successful. I left that first meeting

feeling as though I really could accomplish my dream after all," she said.

Hallmark went on to meet an advisor with the nursing department that helped her navigate her way through registration.

"LSC-Kingwood gave me a direction and confidence I was lacking and so desperately needed," she said.

Hallmark transferred to Sam Houston State University in the summer to finish her degree and will graduate in December. She then plans to attend the University of Texas School of Nursing and South Texas Law School simultaneously.

"Although I've always had the intelligence, I would never have had the confidence to grab hold of my dreams again, if it had not been for my experience at LSC-Kingwood and the scholarship I received through the LSC Foundation."

## MILLION DOLLAR ENDOWMENT ESTABLISHED IN STEGALL'S HONOR



Dr. Richard Carpenter, LSCS chancellor, left, and Dr. Linda Stegall.

The Dr. Linda Stegall Excellence in Education Scholarship Endowment was announced at the Lone Star College System Foundation's StarGala 2008. The \$1 million dollar endowment was created by an anonymous donor in honor of Stegall's service and passion to higher education.

Stegall served as the president of Lone Star College-Kingwood and retired in August after

serving the system since 1994. "I have to say that the last nine years as president of LSC-Kingwood have been the most rewarding," said Stegall.

"This is such a wonderful college with the finest faculty, staff, and students. I have been working full-time in education for over 42 years with 36 of those years in community colleges," Stegall said.

The established endowment will provide 20 Lone Star College-Kingwood student scholarships of \$3,000 annually to students who have demonstrated academic excellence in their first year of college. To receive the scholarship, students must be enrolled full-time at LSC-Kingwood and have an exemplary academic record.

Stegall came to North Harris Montgomery Community College District in 1994 to serve as vice chancellor of education and student services, a position she held for five years before assuming the LSC-Kingwood presidency in 1999.

Continued on page 3.

We hope you enjoy this introductory issue of Beyond, a newsletter from the Lone Star College Foundation, to help donors, community partners, and Lone Star College System employees keep informed of our activities.

The financial and volunteer support you provide helps our students and programs reach beyond their current situations and achieve their dreams.

Lives are changed as a result of an education received within our system. Thank you for making these changes possible.

We are looking forward to keeping you informed and, even more importantly, involved.

Please do not hesitate to contact me, or any of our board or staff members, if you have any questions, comments or suggestions.

Darcy Mingoia  
Executive Director



## LONE STAR COLLEGE FOUNDATION STAFF

- Darcy Mingoia  
Executive Director
- Alise Bailey  
Coordinator
- Judy Lux  
Program Manager, Special Events
- Maribel Maldonado  
Accountant

# LONE STAR COLLEGE FOUNDATION

## FROM LSC FOUNDATION SCHOLARSHIP RECIPIENT TO FOUNDATION DONOR



Kenneth Edwards

Kenneth Edwards, a former student and ambassador, became a LSC Foundation donor this year to honor, he said, the impact LSC-North Harris had on his education and professional career.

Edwards was somewhat familiar with LSC-North Harris having lived in the Greenspoint area and graduating from Aldine High School in 1993.

"I didn't know anything specific about the campus at the time, but after I decided I wanted to attend college, I blindly set my sights upon enrolling there," said Edwards.

"During the summer after I graduated from high school, I saved up approximately \$600 from my part-time job earnings to pay for my tuition and books," he said.

While at LSC-North Harris Edwards studied basic course work and ultimately earned an associate's of art degree. He also became the college's first student to earn the honors program graduate designation.

During his time on campus Edwards participated as a student ambassador and was a member of Phi Theta Kappa.

"Notably, through Phi Theta Kappa, I was selected to the USA Today All-USA Junior College Academic Team, which

is a recognition given to top junior college students around the country. Later, I was also selected to the Texas All-State Academic Team," said Edwards.

As a student ambassador Edwards received financial assistance through the foundation for his service.

"Of course, at that time, any scholarship assistance was welcomed, as it helped me pay for my tuition and remain enrolled in college," he said.

Edwards was able to continue his education and currently works as an attorney in Houston for a private practice.

**"It is important to support the LSC Foundation because it is truly making a difference. Without question, the foundation is fulfilling its mission of providing educational opportunities for the community," he said.**

## FACULTY COLLABORATES FOR TOMBALL ENDOWMENT



LSC-Tomball Math Department staff presenting its second \$15,000 endowment to the LSC-Foundation. Recently, the Math Department funded its third endowment.

What began as a project 10 years ago to create a lab manual for algebra courses at Lone Star College-Tomball, eventually evolved into a hefty endowment benefitting student scholarships.

In 1998, after reviewing available resources, the team of Dr. Mary Pearce, Patricia Stone, and Dr. Peg Crider collaborated to write and custom-publish a lab manual for each of the introductory and intermediate algebra courses. The goal was to strengthen developmental math curriculum by incorporating the graphing calculator as a tool to stimulate students to think mathematically and to broaden the conceptual basis of the developmental mathematics curriculum.

In later revisions, Patricia Funderberg, Dr. Bill Powell, Roger Jay, and Dr. Eric Wildman wrote new modules for the manuals and Melinda Coleman edited the manuals.

"Eventually, almost every faculty member of the LSC-Tomball mathematics department played a role in revising or implementing the program," said Crider, professor of mathematics.

"The LSC-Tomball mathematics department began receiving royalties in 1998 from the publication and sale of the Introductory Algebra Calculator Laboratory Manual and the Intermediate Algebra Calculator Laboratory Manual. All of the proceeds were to be disbursed to students for exceptional achievement in developmental and college-level mathematics at LSC-Tomball," said Crider.

Beginning fall semester 2000, 10 scholarships of \$300 were awarded to mathematics students. The number of scholarships was increased to 12 at \$500 each beginning fall semester 2002.

"The philosophy of embracing creative approaches to teaching mathematics is the tradition and hallmark of the math department at LSC-Tomball," said Pat Stone, mathematics professor. "This department has a passion for helping students learn mathematics," said Stone.

In 2006, the department established and fully funded (\$15,000) the LSC-Tomball Mathematics Excellence Endowed Scholarship to recognize a qualified student who intended to major in mathematics or a mathematics related field of study.

In 2008, the department established and fully funded (\$15,000) the LSC-Tomball Mathematics Commemorative Endowed Scholarship to honor retired mathematics faculty. Scholarship winners were chosen who intended to teach mathematics at any level.

Beginning fall 2009, the annual scholarships will be discontinued, and the LSC-Tomball Outstanding Developmental Mathematics Student endowed scholarship will be established and fully funded (\$15,000).

"We are always amazed at the number of students who say that had it not been for the scholarship that they might have had to withdraw from college," said Crider.

"For those students who earn the scholarship while in developmental mathematics, the award affirms their belief that they have the potential to study anything. In one instance, a student who twice earned the local scholarship - the first time as a developmental mathematics student, has been the president of the mathematics club, and is now studying Calculus III. It is very gratifying to see the accomplishments of the winners," said Crider.

From 2000 to 2009, the LSC-Tomball mathematics department will have awarded a total of \$48,000 to 104 students in local scholarships and will have fully funded endowed scholarships totaling \$45,000 that will generate three \$1,000 scholarships each year, in perpetuity.

Continued on page 3.

## 15TH ANNUAL LSC FOUNDATION GOLF TOURNAMENT A SWINGING SUCCESS



Left to right, first-place team winners Fred Caldwell, John Fishero, Ron Roberson and Bob Williams, LSC-CyFair interim president.

LSC Foundation recently hosted its 15th Annual Golf Tournament at The Woodlands Country Club Palmer Course.

More than 190 golfers teed it up for the Florida Scramble-style tournament, which generated over \$75,000 in support of student scholarships and system programs. Participants enjoyed hole-in-one prize opportunities, hole contests and door prizes.

An awards ceremony and prime rib dinner, sponsored by Oceanering International, Inc., followed the conclusion of the tournament.

Masters level sponsors included Administaff Inc., Advanced Systems Group (ASG) and SHW Group LLP. Classic level sponsors were Caldwell Companies, Gensler, MATTCO Manufacturing, Methodist Willowbrook Hospital, Wells Fargo and The Woodlands Waterway Marriott.

SHW Group, a long-time supporter of LSC Foundation, sponsored the tournament and is building a permanent endowment for scholarships.

"SHW has the opportunity to work with many foundations and I can say with confidence that LSC Foundation is one of the best in the country," said principal, Don Hensley.

The golf tournament offers our supporters a unique opportunity to help students while participating in a fun event," Darcy Mingoia, LSC Foundation executive director explained.

"We had a great time, the golf course was excellent and the foundation staff did a great job hosting all the players," said Fred Caldwell, Caldwell Companies and first place tournament winner.

**"We are grateful for the opportunity to support the foundation's mission of providing scholarships to help change lives," said Caldwell.**

Funds raised through the tournament provide opportunities for LSCS students to learn the skills necessary for jobs that will ultimately contribute to the vitality of the economy.

"The support of our contributors changes lives by funding educational opportunities and programs," Mingoia added.

"We are grateful for each and every one those contributors," she said.

## FACULTY COLLABORATES

Continued from page 2.

"The LSC-Tomball mathematics department faculty truly have a mutual respect for one another," said department chair Dr. Claudia Davis.

**"We have a common goal of making our students' lives better, and a shared hobby... we actually do math for fun," said Davis.**

## STEGALL'S HONOR

Continued from page 1.

Prior service includes several administrative positions with the Dallas County Community College District including vice president of instruction at the district's El Centro and Mountain View colleges, and district director of career and continuing education.

Before her employment with Dallas, she held an administrative position with the Texas Education Agency and teaching posts at Tarrant County Junior College and Castleberry and Richland high schools.

## LSC FOUNDATION OFFERS SUMMER 'BRIDGE' PROGRAM TO AID STUDENTS

Lone Star College System will offer summer bridge programs for first-time college students during the summer of 2009.

These intensive programs are targeted for students who need extra academic work to place into credit courses and become college ready for the fall semester.

"The Lone Star College Foundation hopes to raise \$50,000 to provide fifty, \$1,000 scholarships to students interested in taking the courses," said Darcy Mingoia, LSC Foundation executive director.

## HELP US... write our next issue of BEYOND

What type of stories would you like to read next quarter?

- Student success stories
- Donor stories
- Descriptions of our programs
- Campus updates
- State of the System
- Other. Please describe.

Email suggestions to [foundation@LoneStar.edu](mailto:foundation@LoneStar.edu) or fax to 832.813.6639.

## LONE STAR COLLEGE FOUNDATION UPCOMING EVENTS

**CHANCELLOR'S BREAKFAST,** Wednesday, Jan. 28, 2009, Shirley Acres.

**STARGALA 2009,** Saturday, May 30, 2009, The Woodlands Waterway Marriott.

"Many of these students are low-income, first-generation students who need financial assistance in order to advance into college-level work," said Dr. Larry Rideaux, LSCS associate vice chancellor for student success.

"Offering scholarships for tuition and books is an excellent strategy for encouraging students to enroll in summer bridge programs," he said.

"Nothing is more important than helping these students accomplish their goals on-time coupled with this type of innovative program and financial assistance," said Rideaux.

To donate to the summer bridge scholarship program please contact the LSC Foundation office at 832.813.6637 or use the enclosed envelope.



2007 Student Essay Contest winners who each received a \$1,000 scholarship from the LSC Foundation. Attend the Chancellor's Breakfast on Jan. 28, 2009, and meet the 2008 winners and learn how their experiences at a Lone Star College influenced their lives.