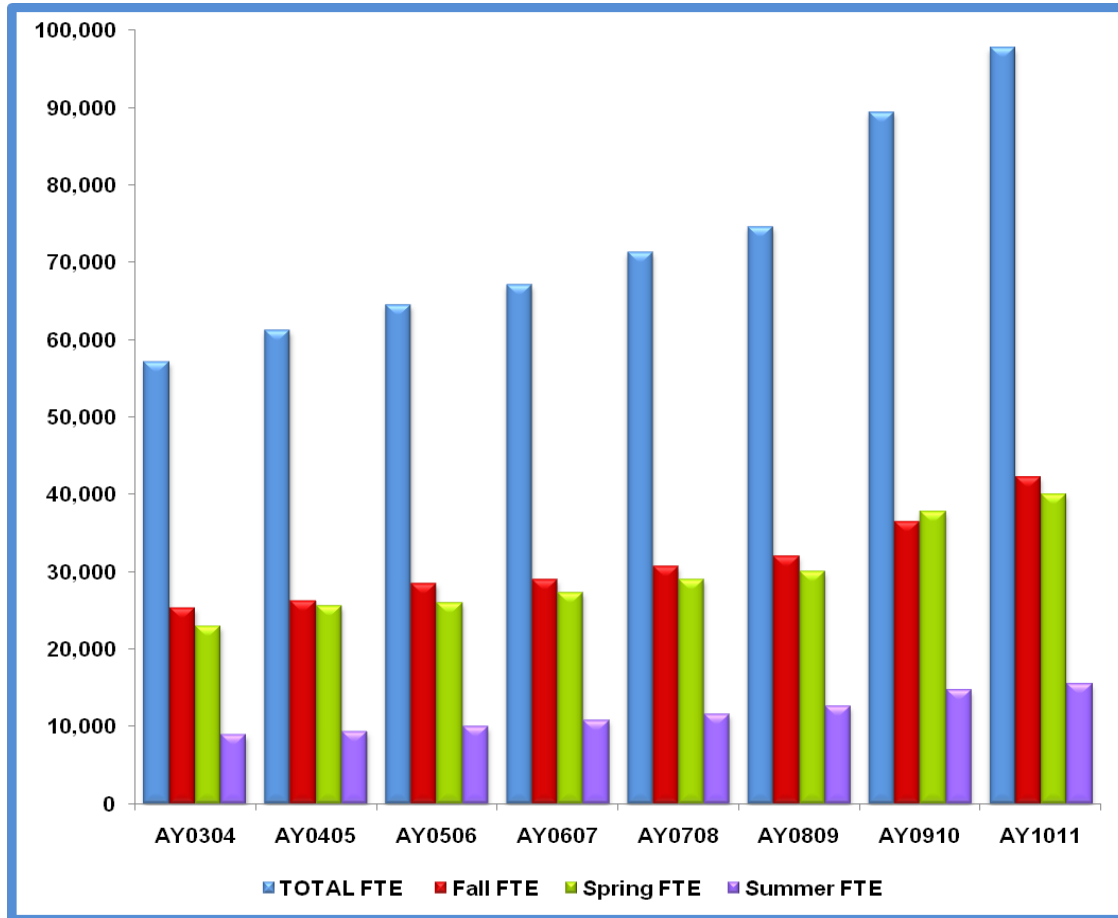


**Lone Star College System
System-wide
Student Full-time Equivalent (FTE) by Academic Year
LSCS FTE Calculation Methodology¹**



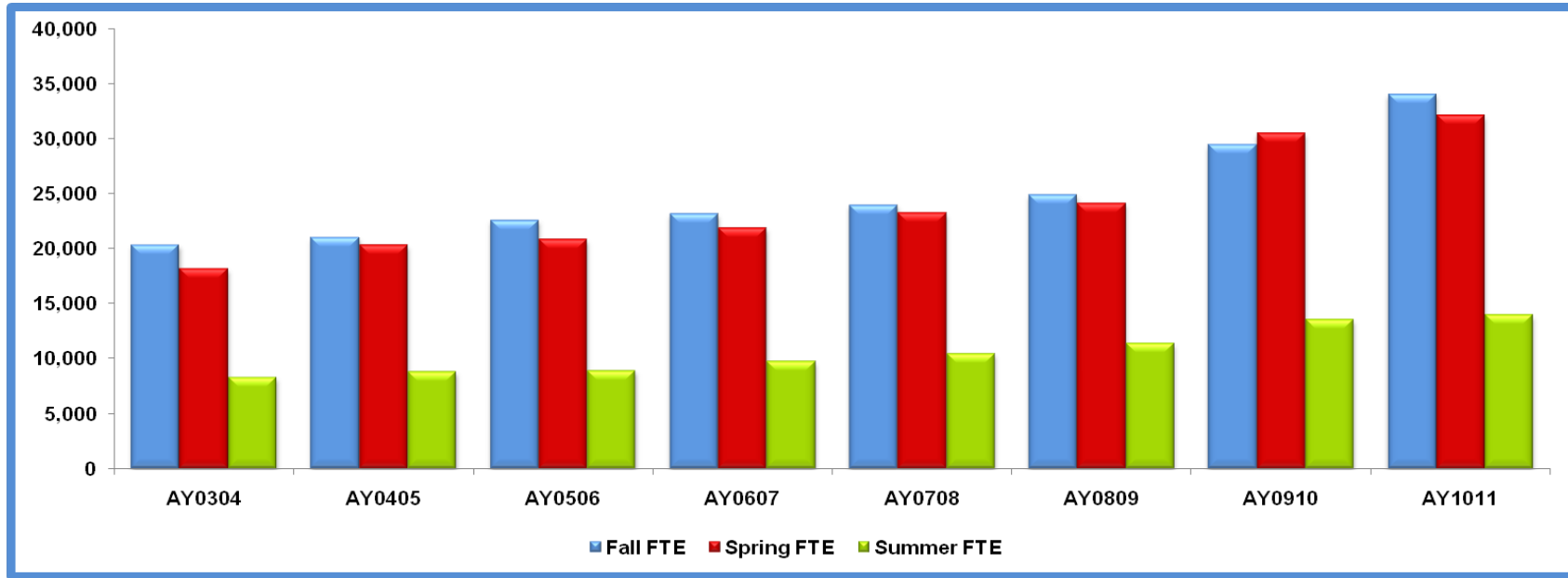
Academic Year	TOTAL FTE by Academic Year ²	Fall Total Credit Hours	Fall FTE	Spring Total Credit Hours	Spring FTE	Summer Total Credit Hours	Summer FTE	Total Credit Hours by Academic Year	Total Credit Hours Divided by 30
AY1011	97,826	507,060	42,255	480,432	40,036	186,417	15,535	1,173,909	39,096
AY0910	89,443	437,827	36,486	453,280	37,773	176,006	14,667	1,067,113	35,777
AY0809	74,585	384,204	32,017	360,002	30,000	150,808	12,567	895,014	29,834
AY0708	71,288	368,137	30,678	348,082	29,007	139,236	11,603	855,455	28,515
AY0607	67,086	347,314	28,943	327,753	27,313	129,964	10,830	805,031	26,834
AY0506	64,497	342,281	28,523	312,217	26,018	119,471	9,956	773,969	25,799
AY0405	61,221	315,568	26,297	306,736	25,561	112,344	9,362	734,648	24,488
AY0304	57,164	303,466	25,289	275,472	22,956	107,027	8,919	685,965	22,866

¹LSCS FTE Calculation Methodology = Total Credit Hours divided by 12.

²Academic year FTE is the total of Fall, Spring and Summer terms.

Source: ORIE Official Day Registration Reports
Wo-3214
cah

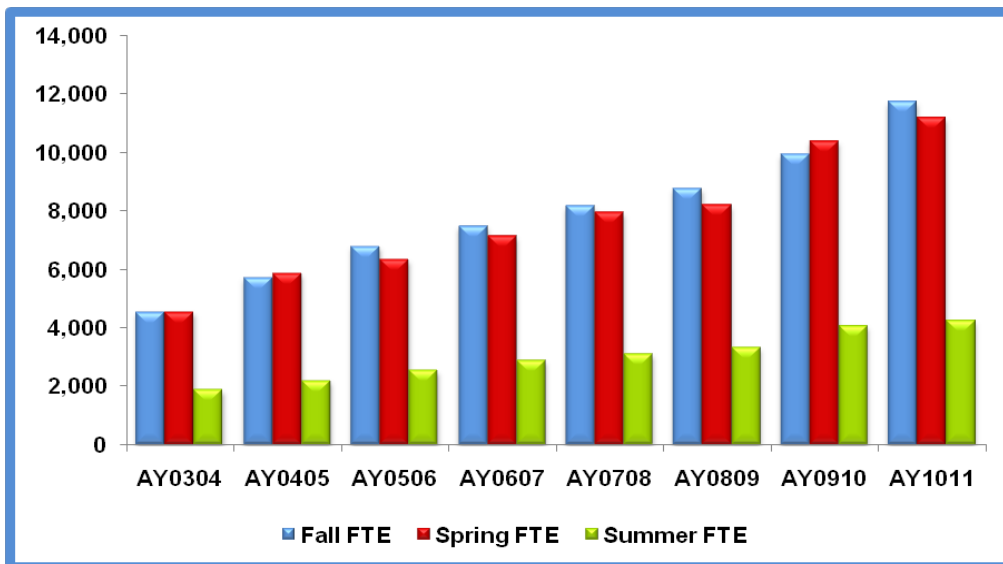
**Lone Star College System
System-wide
Student Full-time Equivalent (FTE) by Academic Year
IPEDS FTE Calculation Methodology¹**



Academic Year	Fall					Spring					Summer				
	Total Students	Full-time	Part-time	PT *.335737	FTE	Total Students	Full-time	Part-time	PT *.335737	FTE	Total Students	Full-time	Part-time	PT *.335737	FTE
AY1011	69,339	16,144	53,195	17,860	34,004	69,245	13,246	55,999	18,801	32,047	38,510	1,446	37,064	12,444	13,890
AY0910	58,844	14,536	44,308	14,876	29,412	62,406	14,317	48,089	16,145	30,462	37,227	1,489	35,737	11,998	13,487
AY0809	51,494	11,372	40,122	13,470	24,842	49,786	11,109	38,677	12,985	24,094	31,410	1,166	30,244	10,154	11,320
AY0708	49,253	11,165	38,088	12,788	23,953	47,600	10,852	36,747	12,337	23,189	28,876	1,075	27,801	9,334	10,409
AY0607	46,058	11,510	34,548	11,599	23,109	45,022	10,097	34,925	11,726	21,822	26,850	998	25,852	8,679	9,678
AY0506	45,122	11,155	33,967	11,404	22,559	42,754	9,684	33,070	11,103	20,787	24,713	878	23,835	8,002	8,880
AY0405	41,464	10,600	30,934	10,386	20,985	41,534	9,539	31,995	10,742	20,281	24,233	968	23,265	7,811	8,779
AY0304	38,699	11,004	27,695	9,298	20,302	35,978	9,130	26,848	9,014	18,144	22,543	1,066	21,477	7,211	8,277

¹IPEDS FTE Calculation Methodology = FT + (PT x .335737).

**Lone Star College System
LSC-CyFair
Student Full-time Equivalent (FTE) by Academic Year
LSCS FTE Calculation Methodology¹**



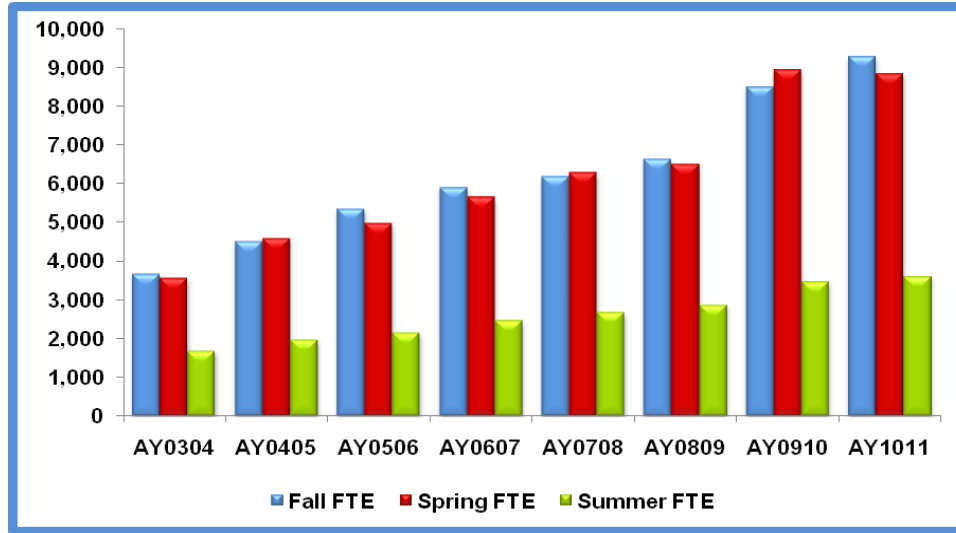
Academic Year	TOTAL FTE by Academic Year ²	Fall Total Credit Hours	Fall FTE	Spring Total Credit Hours	Spring FTE	Summer Total Credit Hours	Summer FTE	Total Credit Hours by Academic Year	Total Credit Hours divided by 30
AY1011	27,086	140,499	11,708	134,063	11,172	50,472	4,206	325,034	10,834
AY0910	24,356	119,114	9,926	124,494	10,375	48,661	4,055	292,269	9,742
AY0809	20,237	104,957	8,746	98,151	8,179	39,738	3,312	242,846	8,095
AY0708	19,171	97,677	8,140	95,235	7,936	37,138	3,095	230,050	7,668
AY0607	17,456	89,680	7,473	85,400	7,117	34,392	2,866	209,472	6,982
AY0506	15,622	81,283	6,774	75,903	6,325	30,279	2,523	187,465	6,249
AY0405	13,724	68,332	5,694	70,195	5,850	26,158	2,180	164,684	5,489
AY0304	10,906	54,227	4,519	54,381	4,532	22,261	1,855	130,869	4,362

¹LSCS FTE Calculation Methodology = Total Credit Hours divided by 12.

²Academic year FTE is the total of Fall, Spring and Summer terms.

Source: ORIE Official Day Registration Reports
Wo-3214
cah

**Lone Star College System
LSC-CyFair
Student Full-time Equivalent (FTE) by Academic Year
IPEDS FTE Calculation Methodology¹**



Academic Year	Fall					Spring					Summer				
	Total Students	Full-time	Part-time	PT *.335737	FTE	Total Students	Full-time	Part-time	PT *.335737	FTE	Total Students	Full-time	Part-time	PT *.335737	FTE
AY1011	18,107	4,855	13,252	4,449	9,304	18,188	4,140	14,048	4,716	8,856	9,803	466	9,337	3,135	3,601
AY0910	15,175	4,208	10,967	3,682	8,516	16,285	4,224	12,061	4,049	8,962	9,423	444	8,979	3,015	3,459
AY0809	13,202	3,330	9,872	3,314	6,644	12,817	3,313	9,504	3,191	6,504	7,853	332	7,521	2,525	2,857
AY0708	12,298	3,103	9,195	3,087	6,190	12,243	3,299	8,944	3,003	6,302	7,250	364	6,886	2,312	2,676
AY0607	11,216	3,229	7,987	2,682	5,911	11,071	2,923	8,148	2,736	5,658	6,660	328	6,332	2,126	2,454
AY0506	10,351	2,842	7,509	2,521	5,363	9,993	2,458	7,535	2,530	4,988	5,848	270	5,578	1,873	2,143
AY0405	8,727	2,383	6,344	2,130	4,513	9,221	2,265	6,956	2,335	4,600	5,336	261	5,075	1,704	1,965
AY0304	6,900	2,061	4,839	1,625	3,685	7,049	1,825	5,224	1,754	3,579	4,546	235	4,311	1,447	1,682

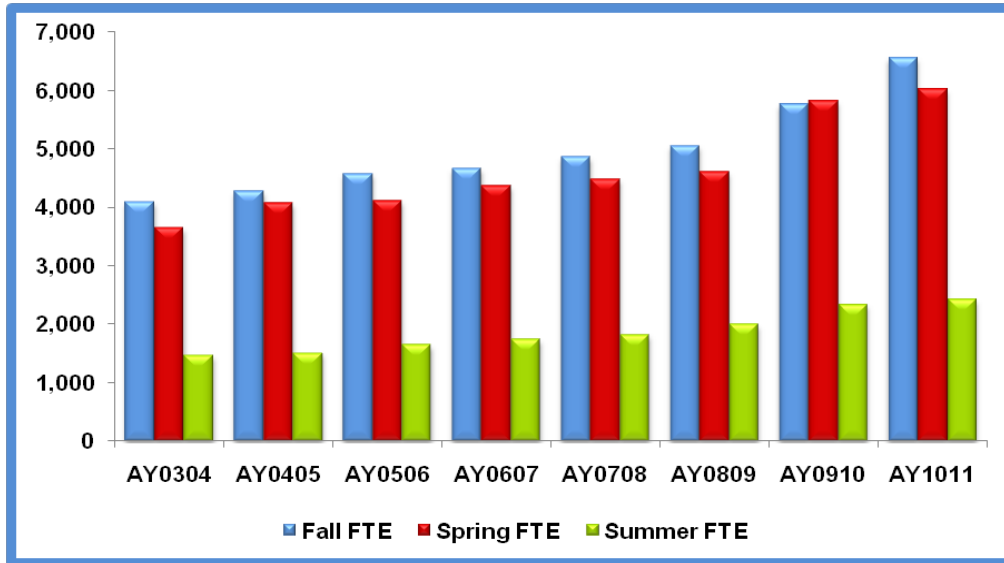
¹IPEDS FTE Calculation Methodology = FT + (PT x .335737).

Source: ORIE Official Day Registration Reports

WO-3214

cah

**Lone Star College System
LSC-Kingwood
Student Full-time Equivalent (FTE) by Academic Year
LSCS FTE Calculation Methodology¹**



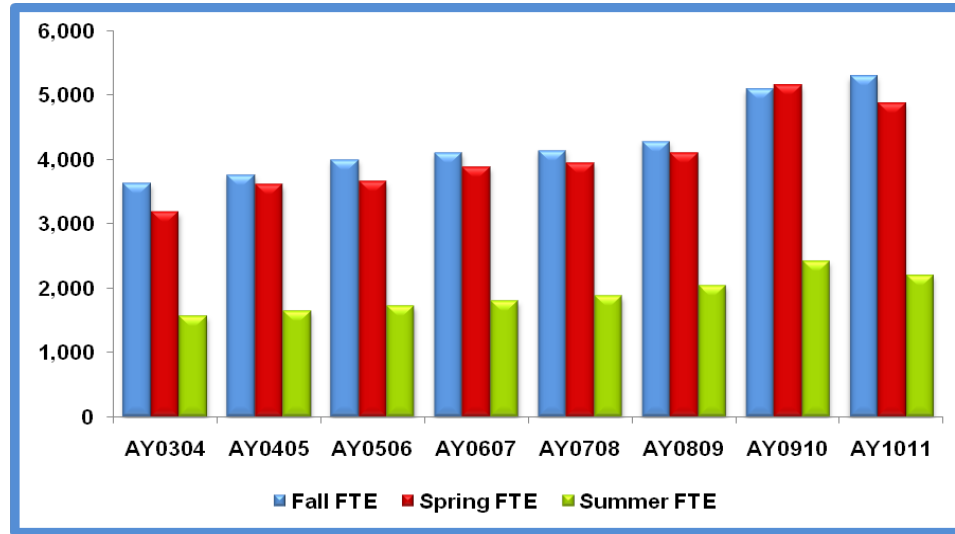
Academic Year	TOTAL FTE by Academic Year ²	Fall Total Credit Hours	Fall FTE	Spring Total Credit Hours	Spring FTE	Summer Total Credit Hours	Summer FTE	Total Credit Hours by Academic Year	Total Credit Hours divided by 30
AY1011	15,007	78,749	6,562	72,296	6,025	29,036	2,420	180,081	6,003
AY0910	13,936	69,225	5,769	69,918	5,827	28,091	2,341	167,234	5,574
AY0809	11,664	60,707	5,059	55,327	4,611	23,939	1,995	139,973	4,666
AY0708	11,170	58,318	4,860	53,808	4,484	21,911	1,826	134,037	4,468
AY0607	10,776	55,994	4,666	52,432	4,369	20,880	1,740	129,306	4,310
AY0506	10,345	54,995	4,583	49,401	4,117	19,743	1,645	124,139	4,138
AY0405	9,858	51,281	4,273	48,895	4,075	18,122	1,510	118,298	3,943
AY0304	9,210	49,142	4,095	43,800	3,650	17,580	1,465	110,522	3,684

¹LSCS FTE Calculation Methodology = Total Credit Hours divided by 12.

²Academic year FTE is the total of Fall, Spring and Summer terms.

Source: ORIE Official Day Registration Reports
Wo-3214
cah

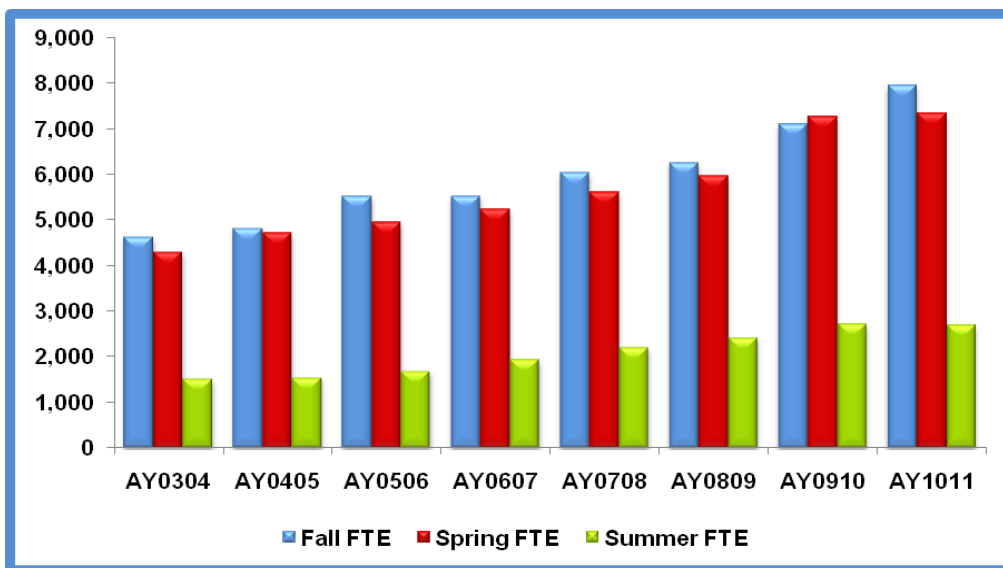
**Lone Star College System
LSC-Kingwood
Student Full-time Equivalent (FTE) by Academic Year
IPEDS FTE Calculation Methodology¹**



Academic Year	Fall					Spring					Summer				
	Total Students	Full-time	Part-time	PT *.335737	FTE	Total Students	Full-time	Part-time	PT *.335737	FTE	Total Students	Full-time	Part-time	PT *.335737	FTE
AY1011	10,879	2,459	8,420	2,827	5,286	10,731	1,903	8,828	2,964	4,867	6,101	218	5,883	1,975	2,193
AY0910	9,293	2,364	6,929	2,326	5,086	9,654	2,227	7,427	2,494	5,145	5,735	266	5,469	1,836	2,415
AY0809	8,195	1,738	6,457	2,168	4,275	7,662	1,788	5,874	1,972	4,096	4,836	227	4,609	1,547	2,038
AY0708	7,918	1,680	6,238	2,094	4,131	7,444	1,669	5,775	1,939	3,938	4,434	208	4,226	1,419	1,868
AY0607	7,413	1,951	5,462	1,834	4,097	7,212	1,711	5,501	1,847	3,872	4,288	179	4,109	1,379	1,793
AY0506	7,235	1,882	5,353	1,797	3,985	6,688	1,681	5,007	1,681	3,648	4,120	161	3,959	1,329	1,716
AY0405	6,692	1,855	4,837	1,624	3,755	6,588	1,664	4,924	1,653	3,598	3,876	190	3,686	1,237	1,638
AY0304	6,259	1,914	4,345	1,459	3,621	5,580	1,618	3,962	1,330	3,175	3,609	236	3,373	1,132	1,561

¹IPEDS FTE Calculation Methodology = FT + (PT x .335737).

Lone Star College System LSC-Montgomery Student Full-time Equivalent (FTE) by Academic Year LSCS FTE Calculation Methodology¹



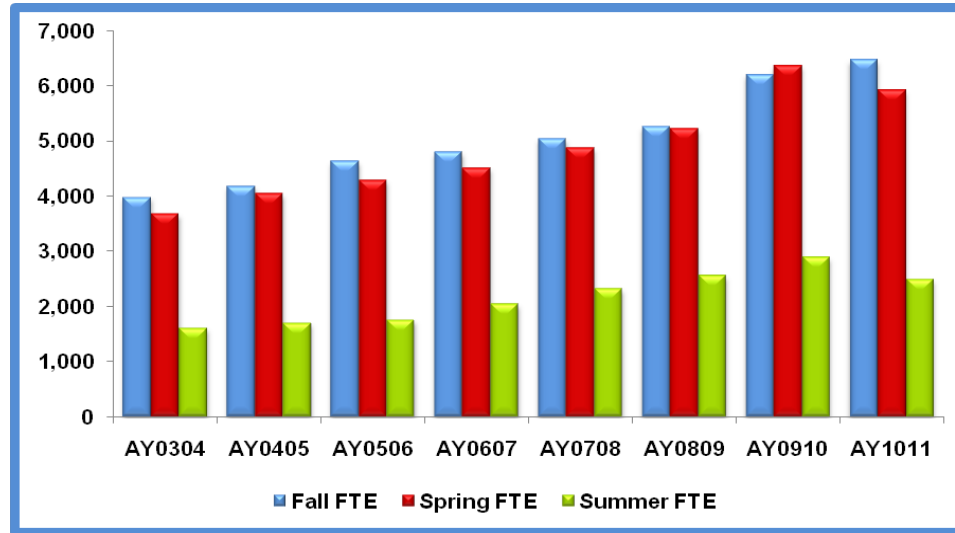
Academic Year	TOTAL FTE by Academic Year ²	Fall Total Credit Hours	Fall FTE	Spring Total Credit Hours	Spring FTE	Summer Total Credit Hours	Summer FTE	Total Credit Hours by Academic Year	Total Credit Hours divided by 30
AY1011	17,990	95,481	7,957	88,104	7,342	32,293	2,691	215,878	7,196
AY0910	17,097	85,378	7,115	87,159	7,263	32,622	2,719	205,159	6,839
AY0809	14,662	75,215	6,268	71,830	5,986	28,893	2,408	175,938	5,865
AY0708	13,868	72,535	6,045	67,464	5,622	26,418	2,202	166,417	5,547
AY0607	12,716	66,413	5,534	62,836	5,236	23,337	1,945	152,586	5,086
AY0506	12,163	66,276	5,523	59,505	4,959	20,175	1,681	145,957	4,865
AY0405	11,087	57,942	4,829	56,573	4,714	18,526	1,544	133,041	4,435
AY0304	10,441	55,575	4,631	51,542	4,295	18,178	1,515	125,294	4,176

¹LSCS FTE Calculation Methodology = Total Credit Hours divided by 12.

²Academic year FTE is the total of Fall, Spring and Summer terms.

Source: ORIE Official Day Registration Reports
Wo-3214
cah

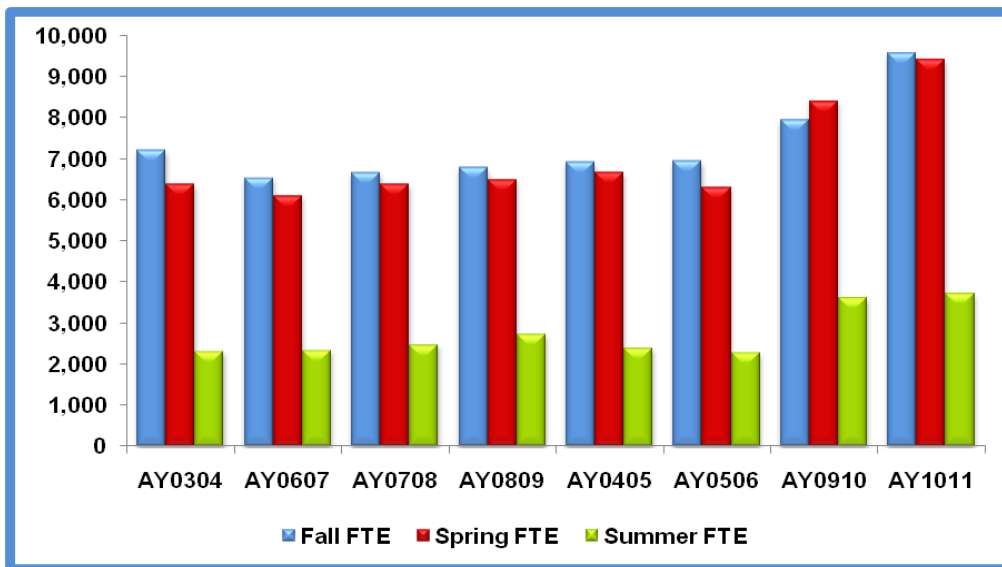
**Lone Star College System
LSC-Montgomery
Student Full-time Equivalent (FTE) by Academic Year
IPEDS FTE Calculation Methodology¹**



Academic Year	Fall					Spring					Summer				
	Total Students	Full-time	Part-time	PT *.335737	FTE	Total Students	Full-time	Part-time	PT *.335737	FTE	Total Students	Full-time	Part-time	PT *.335737	FTE
AY1011	12,653	3,331	9,322	3,130	6,461	12,567	2,550	10,017	3,363	5,913	6,857	277	6,580	2,209	2,486
AY0910	10,962	3,113	7,849	2,635	6,197	11,648	2,936	8,712	2,925	6,359	6,932	263	6,669	2,239	2,883
AY0809	9,666	2,398	7,268	2,440	5,253	9,598	2,380	7,218	2,423	5,216	6,075	265	5,810	1,951	2,547
AY0708	9,254	2,296	6,958	2,336	5,029	8,898	2,258	6,640	2,229	4,867	5,598	190	5,408	1,816	2,315
AY0607	8,470	2,412	6,058	2,034	4,792	8,248	2,087	6,161	2,068	4,508	4,893	185	4,708	1,580	2,035
AY0506	8,185	2,317	5,868	1,970	4,622	7,775	2,027	5,748	1,930	4,285	4,203	163	4,040	1,356	1,750
AY0405	7,434	2,062	5,372	1,804	4,173	7,330	1,898	5,432	1,824	4,032	4,008	197	3,811	1,279	1,694
AY0304	6,903	2,079	4,824	1,620	3,974	6,527	1,823	4,704	1,579	3,671	3,786	195	3,591	1,206	1,606

¹IPEDS FTE Calculation Methodology = FT + (PT x .335737).

**Lone Star College System
LSC-North Harris
Student Full-time Equivalent (FTE) by Academic Year
LSCS FTE Calculation Methodology¹**



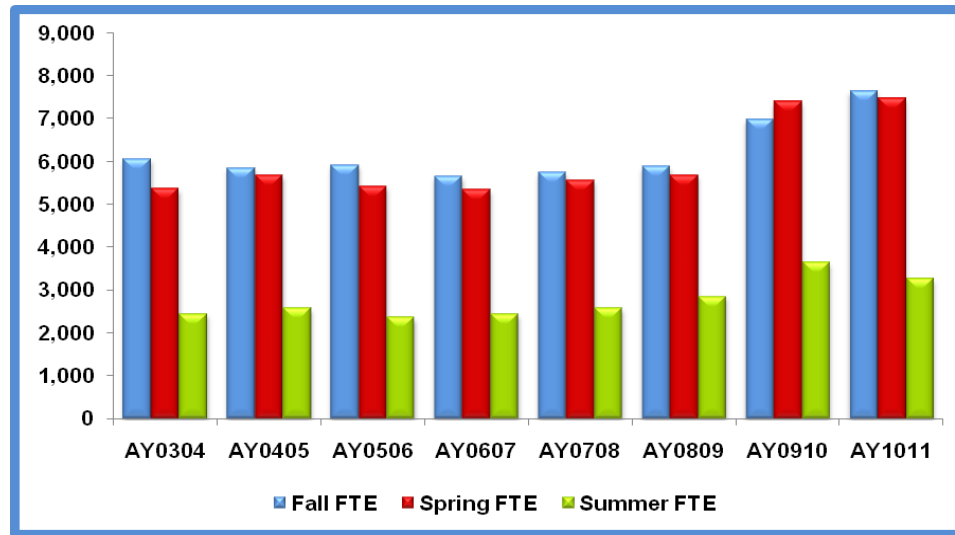
Academic Year	TOTAL FTE by Academic Year ²	Fall Total Credit Hours	Fall FTE	Spring Total Credit Hours	Spring FTE	Summer Total Credit Hours	Summer FTE	Total Credit Hours by Academic Year	Total Credit Hours divided by 30
AY1011	22,686	114,527	9,544	113,058	9,422	44,646	3,721	272,231	9,074
AY0910	19,977	95,331	7,944	100,958	8,413	43,429	3,619	239,718	7,991
AY0809	15,998	81,269	6,772	78,034	6,503	32,670	2,723	191,973	6,399
AY0708	15,516	79,826	6,652	76,669	6,389	29,702	2,475	186,197	6,207
AY0607	14,993	78,357	6,530	73,382	6,115	28,178	2,348	179,917	5,997
AY0506	15,527	83,132	6,928	75,835	6,320	27,361	2,280	186,328	6,211
AY0405	15,973	82,945	6,912	80,055	6,671	28,682	2,390	191,681	6,389
AY0304	15,902	86,379	7,198	76,577	6,381	27,866	2,322	190,823	6,361

¹LSCS FTE Calculation Methodology = Total Credit Hours divided by 12.

²Academic year FTE is the total of Fall, Spring and Summer terms.

Source: ORIE Official Day Registration Reports
Wo-3214
cah

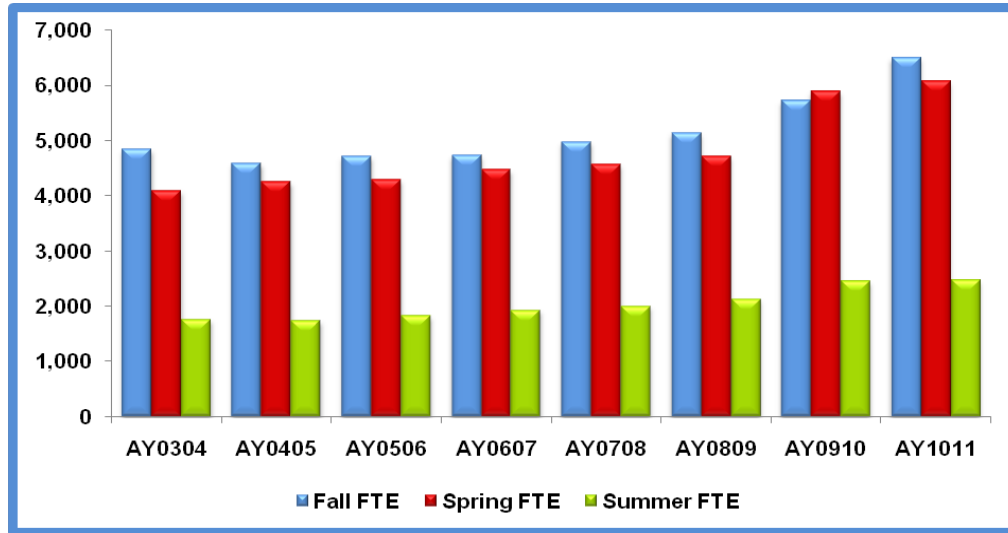
**Lone Star College System
LSC-North Harris
Student Full-time Equivalent (FTE) by Academic Year
IPEDS FTE Calculation Methodology¹**



Academic Year	Fall					Spring					Summer				
	Total Students	Full-time	Part-time	PT *.335737	FTE	Total Students	Full-time	Part-time	PT *.335737	FTE	Total Students	Full-time	Part-time	PT *.335737	FTE
AY1011	16,356	3,232	13,124	4,406	7,638	16,662	2,811	13,851	4,650	7,461	9,108	300	8,808	2,957	3,257
AY0910	13,549	2,714	10,835	3,638	6,971	14,366	2,865	11,501	3,861	7,383	8,782	296	8,486	2,849	3,630
AY0809	11,659	2,126	9,533	3,201	5,871	11,311	2,024	9,287	3,118	5,672	6,966	177	6,789	2,279	2,844
AY0708	11,380	2,076	9,304	3,124	5,731	10,975	2,051	8,924	2,996	5,557	6,293	162	6,131	2,058	2,571
AY0607	10,943	2,207	8,736	2,933	5,639	10,585	1,924	8,661	2,908	5,327	5,950	149	5,801	1,948	2,428
AY0506	11,466	2,307	9,159	3,075	5,905	10,650	2,033	8,617	2,893	5,418	5,770	144	5,626	1,889	2,354
AY0405	11,013	2,475	8,538	2,867	5,829	11,030	2,192	8,838	2,967	5,664	6,214	217	5,997	2,013	2,573
AY0304	11,017	2,837	8,180	2,746	6,050	10,089	2,284	7,805	2,620	5,351	5,835	237	5,598	1,879	2,436

¹IPEDS FTE Calculation Methodology = FT + (PT x .335737).

**Lone Star College System
LSC-Tomball
Student Full-time Equivalent (FTE) by Academic Year
LSCS FTE Calculation Methodology¹**



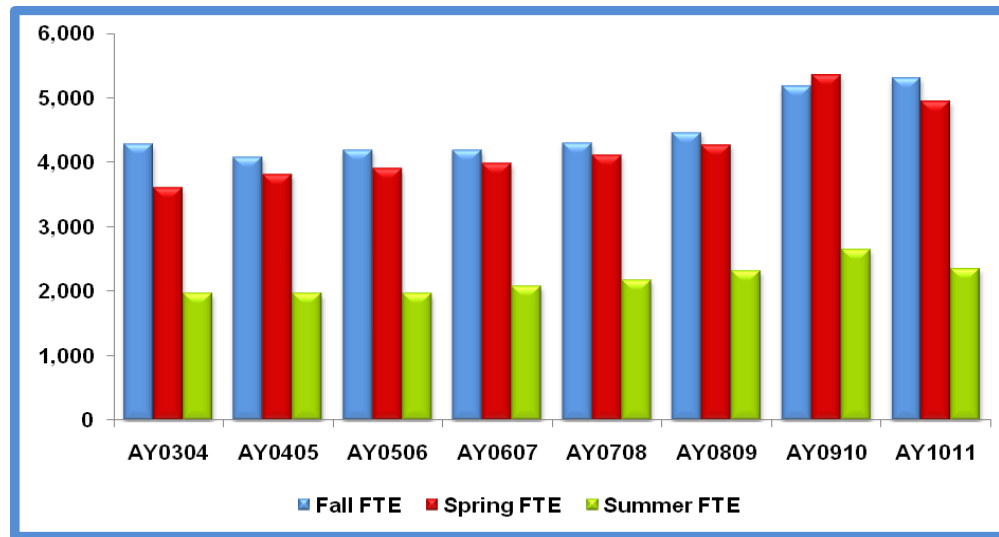
Academic Year	TOTAL FTE by Academic Year ²	Fall Total Credit Hours	Fall FTE	Spring Total Credit Hours	Spring FTE	Summer Total Credit Hours	Summer FTE	Total Credit Hours by Academic Year	Total Credit Hours divided by 30
AY1011	15,052	78,074	6,506	72,911	6,076	29,633	2,469	180,618	6,021
AY0910	14,076	68,749	5,729	70,751	5,896	29,406	2,451	168,906	5,630
AY0809	11,994	61,696	5,141	56,660	4,722	25,568	2,131	143,924	4,797
AY0708	11,563	59,781	4,982	54,906	4,576	24,067	2,006	138,754	4,625
AY0607	11,146	56,870	4,739	53,703	4,475	23,177	1,931	133,750	4,458
AY0506	10,840	56,595	4,716	51,573	4,298	21,913	1,826	130,081	4,336
AY0405	10,579	55,068	4,589	51,018	4,252	20,857	1,738	126,944	4,231
AY0304	10,705	58,144	4,845	49,172	4,098	21,141	1,762	128,457	4,282

¹LSCS FTE Calculation Methodology = Total Credit Hours divided by 12.

²Academic year FTE is the total of Fall, Spring and Summer terms.

Source: ORIE Official Day Registration Reports
Wo-3214
cah

**Lone Star College System
LSC-Tomball
Student Full-time Equivalent (FTE) by Academic Year
IPEDS FTE Calculation Methodology***



Academic Year	Fall					Spring					Summer				
	Total Students	Full-time	Part-time	PT *.335737	FTE	Total Students	Full-time	Part-time	PT *.335737	FTE	Total Students	Full-time	Part-time	PT *.335737	FTE
AY1011	11,344	2,267	9,077	3,047	5,314	11,097	1,842	9,255	3,107	4,949	6,641	185	6,456	2,168	2,353
AY0910	9,865	2,137	7,728	2,595	5,173	10,453	2,065	8,388	2,816	5,360	6,411	217	6,194	2,080	2,650
AY0809	8,761	1,673	7,088	2,380	4,458	8,398	1,604	6,794	2,281	4,273	5,654	164	5,490	1,843	2,321
AY0708	8,453	1,615	6,838	2,296	4,301	8,040	1,579	6,461	2,169	4,117	5,301	151	5,150	1,729	2,174
AY0607	8,016	1,713	6,303	2,116	4,189	7,906	1,456	6,450	2,166	3,990	5,059	157	4,902	1,646	2,083
AY0506	7,885	1,808	6,077	2,040	4,195	7,648	1,483	6,165	2,070	3,905	4,772	141	4,631	1,555	1,960
AY0405	7,598	1,811	5,787	1,943	4,084	7,365	1,520	5,845	1,962	3,816	4,799	131	4,668	1,567	1,965
AY0304	7,620	2,118	5,502	1,847	4,280	6,733	1,582	5,151	1,729	3,605	4,767	162	4,605	1,546	1,971

*IPEDS FTE Calculation Methodology = FT + (PT x .335737).