

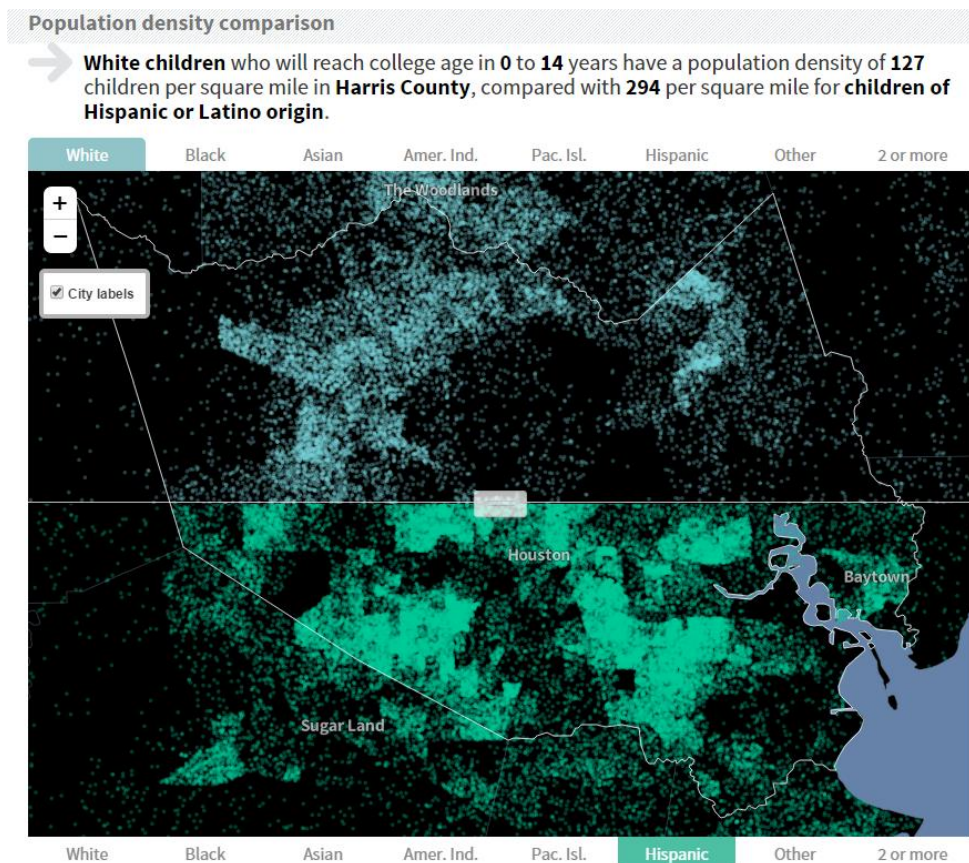
## Who Will Reach College Age in the Next 14 Years?

Demographics is a hot topic right now. Whether in the presidential debates, in meetings here at Lone Star College, or at your kitchen table, everyone seems to be talking about the shifts we are seeing in populations. The Chronicle of Higher Education has a great online tool that displays the demographics of future college students. The application uses data from the 2010 Census and the National Atlas of the United States (among others) to display the changing demographics of future students. Here are few interesting findings when looking at our service area:

The number of children reaching college age in 0 to 14 years in **Harris County** is projected to be 963,213 (23.5% of the total population).

The number of children reaching college age in 0 to 14 years in **Montgomery County** is projected to be 104,696 (22% of the total population).

The tool includes a "Population Density Comparison" map that displays the projected density based on ethnicity. Here's a screenshot of Harris County comparing white children to Hispanic/Latino children:



Fascinating, isn't it?

Try the tool yourself! <http://chronicle.com/interactives/prospects#48201/0-5>

# Meet the Typical Lone Star College Student

Composite based on Fall 2015 Official Day data.

## Our typical student is:

### Female

59% of our students are female.

### Hispanic

36% of our female students are Hispanic.

### Under 25

74% of our female Hispanic students are under 25 years old.

### Part-Time

70% of our female Hispanic students attend part-time.



## She ...



### Takes Face-to-Face classes only.

*In the population of Hispanic females under 25, 67% are enrolled in Face-to-Face classes only.*



### Attends classes at only 1 college.

*In the population of Hispanic females under 25, 77% attend their classes at a single LSC location.*



### Has 30 cumulative credit hours.



### Has a 2.53 cumulative grade point average.

## Did you know?

The Top 10 Degree Plans for female, Hispanic students under 25 years old are (the top 10 represent 93% of the total):

- Associate of Arts (AA)
- Associate of Science (AS)
- Business (AA/FOS)
- Teaching EC-6 Generalist (AAT)
- Criminal Justice (AA/FOS)
- Biology (AS)
- Accounting (AAS)
- Nursing (AAS)
- Business Management (AAS)
- Business Operations (CERT)